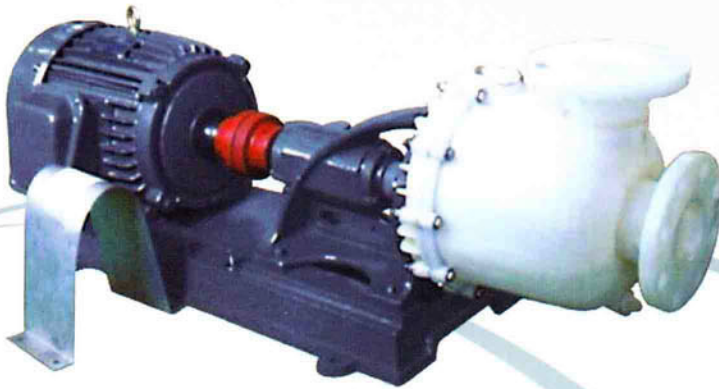


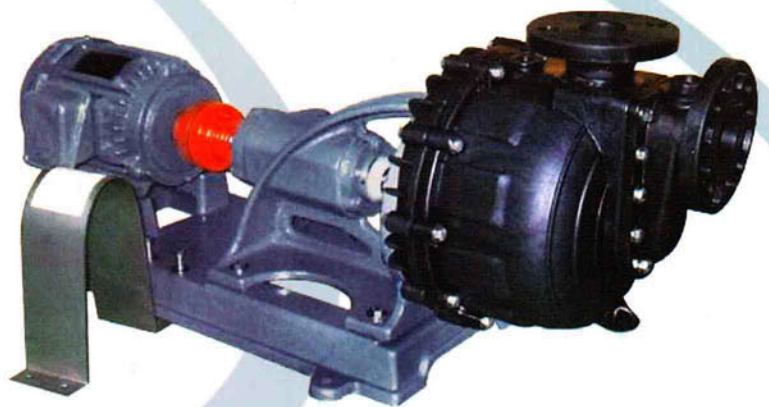


KENJI

KJLKJLF Series



KJLF - TYPE: PVDF



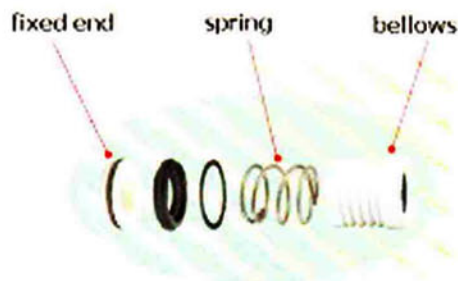
KJL - TYPE: FRPP

Acid & alkali resistant
self-priming chemical pump

Characteristics:

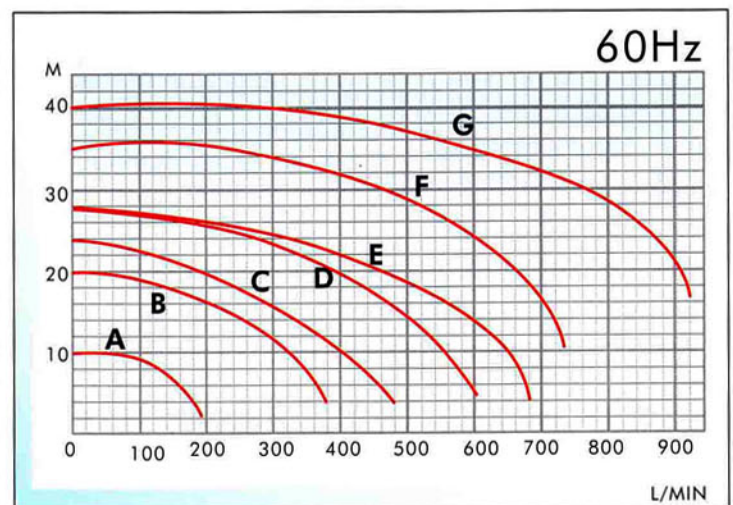
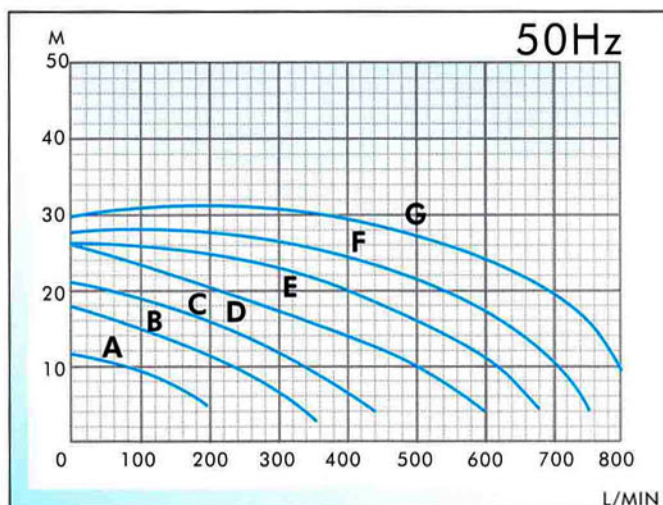
- Special design for shaft seal, use the latest Teflon Bellow seal with inner self-cooling design, without use of circulated cooling pipe.
- Excellent capability to self - priming., Extremely powerful self-priming force. Built with a check valve fully prevents liquid back-flow in pump.
- FRPP and PVDF plastic steel materials provide good corrosion-resistance to strong acid and alkali.
- Special design for strengthening construction

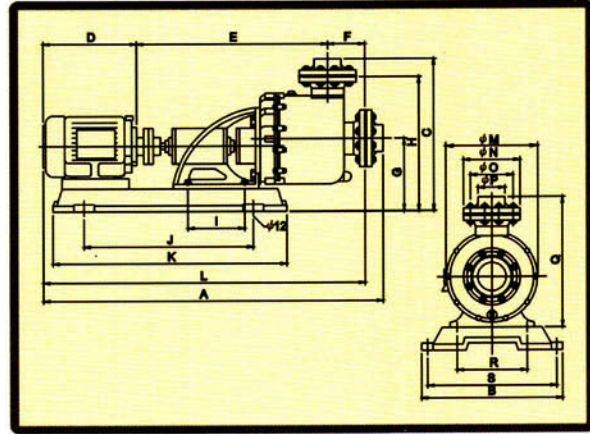
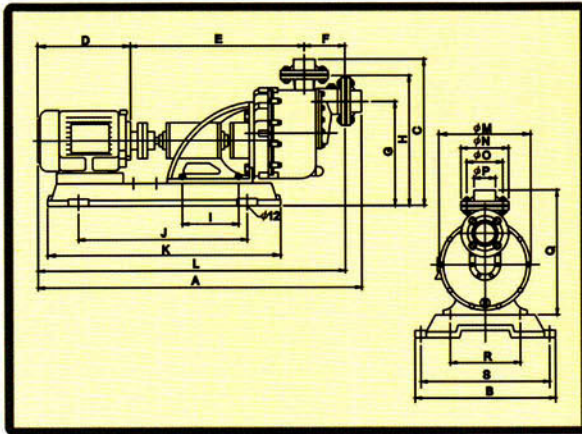
Model No..	Curve No..	Inlet*Outlet diameter (m/m)	Power		50HZ		60HZ		Weight (KG)
			Phase	HP	Total Head (M)	Max. Capacity (L/MIN)	Total Head (M)	Max. Capacity (L/MIN)	
KJL (KJLF)-4012	A	40x40	3 ϕ	1	9	170	9	170	65
KJL (KJLF)-4022	B	40x40	3 ϕ	2	18	320	18	340	73
KJL (KJLF)-5032	C	50x50	3 ϕ	3	21	420	24	420	81
KJL (KJLF)-5052	D	50x50	3 ϕ	5	25	450	27	450	95
KJL (KJLF)-7552	E	80x80	3 ϕ	5	25	680	27	700	100
KJL (KJLF)-7572	F	80x80	3 ϕ	7.5	27	730	35	750	116
KJL (KJLF)-75102	G	80x80	3 ϕ	10	30	800	40	850	122



The unique teflon bellows design with various such as Ceramic, Carbon, SIC and Hastelloy-C Spring ensure excellent durability in corrosion resistance.

Performance

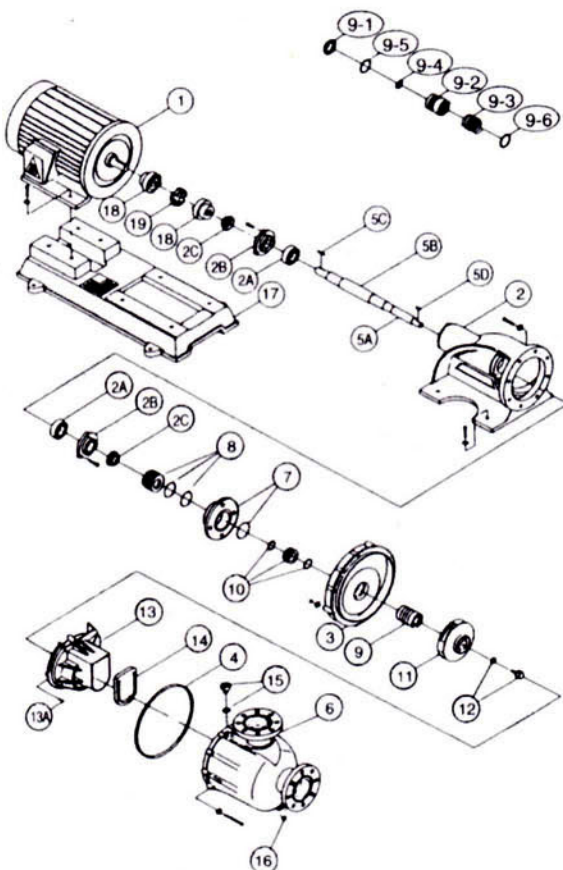




KJL & KJLF Dimension

MODEL	A	B	C	D	E	F	G	H	I	J	K	L	M	N	O	P	Q	R	S
KJL(KJLF)-4012	892	325	447	242	455	130	299	382	194	439	595	827	294	140	105	40	392	166	283
KJL(KJLF)-4022	989	330	447	283	511	130	298	382	194	490	651	924	294	140	105	40	392	166	289
KJL(KJLF)-5032	999	330	456	283	511	130	298	382	194	490	651	924	294	154	121	50	392	166	289
KJL(KJLF)-5052	1134	363	467	332	597	130	322	402	194	527	698	1059	294	154	121	50	392	166	312
KJL(KJLF)-7552	1174	363	483	332	653	114	223	408	194	527	698	1099	294	188	151	75	408	166	312
KJL(KJLF)-7572	1216	382	483	374	653	114	223	408	194	540	730	1141	294	188	151	75	408	166	332
KJL(KJLF)-75102	1216	382	483	374	653	114	223	408	194	540	730	1141	294	188	151	75	408	166	332

Construction



Parts & Material List

NO.	PART	MATERIAL	
		KJL	KJLF
1	MOTOR		
2	BASE FRAME	FC	FC
2A	FRAME BEARING		
2B	BEARING COBRT	FC	FC
2C	WATER DEFEND SEAK	PP	PP
3	REAR COVER	FRPP	PVDF
4	REAR COVER O-RING	EPDM	VITON
5A	SLEEVE	TEFLON	TEFLON
5B	SHAFT	SUS	SUS
5C	CONNECTION KEY		
5D	SHAFT KEY	SUS	SUS
6	PUMP CASING	FRPP	PVDF
7	SEAL COVER O-RING	FRPP	PVDF
8	REAR SEAL	CE/EPDM	SIC/PVDF
9	FRONT SEAL	CA/SUS/EPDM	SIC/HC/VITON
9-1	ROTATIONAL RING	CA/PC/SIC	CA/PC/SIC
9-2	TEFLON BELLOWS	TEFLON	TEFLON
9-3	SPRING	SUS316/HC	SUS316/HC
9-4	FRONG O-RING	VITON	VITON
9-5	PACKING	VITON	VITON
9-6	REAR O-RING	VITON	VITON
10	STATIONARY RING AND O-RING	CERAMIC/VITON	CERAMIC/VITON
11	IMPELLER	FRPP	PVDF
12	IMPELLER NUT AND O-RING	FRPP/EPDM	PVDF/VITON
13	INNER VOLUTE	FRPP	PVDF
13A	INNER VOLUTE NUT	SUS	SUS
14	UNIDIRECTIONAL VALVE	EPDM	VITON
15	WATER FILLING CAP & O-RING	FRPP/EPDM	PVDF/VITON
16	WATER DRAINAGE CAP AND PACKING	FRPP/EPDM	PVDF/VITON
17	BASE FRAME-MOTOR	FC	FC
18	COUPLING	FC/SUS	FC/SUS
19	COUPLING RUBBER	NBR	NBR

Chemical Resistance

Chemicals	Concentration %	Temp. °C	Pump Casing			Seal			Packing			
			FRPP	CFRPP	PVDF	Ceramic	Carbon	Sic	NBR	EPT	VITON	
HNO ₃ Nitric acid	20	40	●	●	●	●		●			●	
		60	○	○	●	○		●			●	
		80	○	○	●			●			●	
	50	40	●	●	●			●			●	
		60	○	○	●			●			●	
CrO ₃ Chromic acid	20	40			●	●					●	
		60			●	●					●	
		80			●	●					○	
H ₃ PO ₄ Phosphoric acid	25	40	●	●	●	●	●	●	●	●	●	
		60	●	●	●	●	●	●	○	●	●	
		80	○	○	●	●	●	●		○	●	
	50	40	●	●	●	●	●	●		○	●	
		60	●	●	●	●	●	●		○	●	
		80	○	○	●	○	●	●		○	●	
NaOH Caustic sode	45	40	●	●	●	△	●	●	●	●	○	
		60	○	○	○	×	●	●	●	●	△	
		80	○	○	×	×	●	●	○	○	△	
FeCl ₃ Ferric chloride		40	●	●	●	●	●	●	●	●	●	
		60	●	●	●	●	●	●	○	●	●	
		80	●	●	●	●	●	●		●	●	
H ₂ SO ₄ Sulfuric acid	30	40	●	●	●	●	●	●	●	●	●	
		60	●	●	●	●	●	●		○	●	
		80	●	●	●	●	●	●		○	●	
		95			●	●	●	●			●	
	60	40	●	●	●	●	●	●	●	●	●	
		60	●	●	●	●	●	●	●	●	●	
		80	○	○	●	●	●	●		○	●	
		95			●	●	●	●			●	
	98	40			●	●	●	●			●	
		60			○	●	●	●			●	
	HF Hydrofluoric	25	40	×	●	●	×	○	●		●	●
			60	×	○	●	×	○	●		●	●
80			×	×	●	×	○	●		○	●	
HCl+HNO ₃ Aqua regia	3:1	40	×	×	●	○	×	●	×		○	
		60	×	×	●	○	×	●	×		○	
		80	×	×	●		×	●	×		●	
HCL Hydrochloric acid	15	40	●	●	●	○	●	●		●	●	
		60	●	●	●	●	●	●		●	●	
		80	○	○	●	●	●	●		○	●	
	32	40	●	●	●	●	●	●		○	○	
		60	●	●	●	●	●	●				
		80	○	○	●	●	●	●	●			
Zn Cl ₂ Zinc Chlorate		40	●	●	●	●	●	●	●		●	
		60	●	●	●	●	●	●	●		●	
NiSO ₄ Nickel Sulfate		40	●	●	●	●	●	●	●		●	
		60	●	●	●	●	●	●	●		●	
H ₂ O ₂ Hydrogen peroxide	10	40	●	●	●	●	×	●	×		●	
		60	○	○	●	●	×	●	×		●	
		80	×	×	●	●	×	●	×		●	
NaOCl Sodium Hypochlorite	10	40	○	○	●	●	○	●			●	
		60	△	△	●	●	△	●			●	
		80	×	△	●	●	×	●			●	
CH ₃ COOH Acetic acid	25	40	●	●	●	●	●	●			×	
		60	●	●	●	●	●	●			×	
		80	○	○	●	●	●	●			×	
Cu(CN) ₂ Copper Cyanide		40	●	●	●	△	●	●	●		●	
		60	●	●	●	△	●	●	●		●	
		80										

● Very good ○ good △ No good × Poor

PT. LUKES INDONESIA

Lindeteves Trade Center Lt UG, Blok B1 No. 6
Jalan Hayam Wuruk, Jakarta - Indonesia
Phone : 021 - 6231 7842, 628 5144
Fax : 021 - 6231 0499
email : sales@lukesindeonesia.com

