

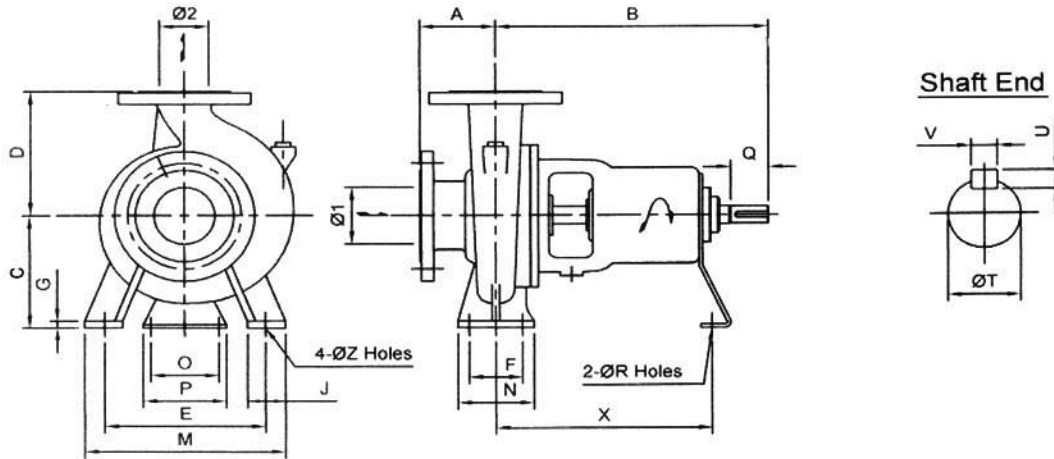
Ebara End Suction Volute Pump

Model FSA

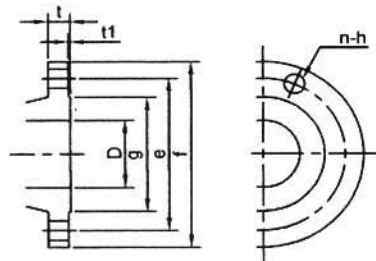
Dimension - Bare Shaft Pump (10 Bar Model)

50 Hz

Pump



Flange



Dimension - Flange (JIS 10K RF)

D mm	f mm	e mm	g mm	t1 mm	t mm	n	h mm
40	140	105	81	2	20	4	19
50	155	120	96	2	20	4	19
65	175	140	116	2	22	4	19
80	185	150	126	2	22	8	19
100	210	175	151	2	24	8	19
125	250	210	182	2	24	8	23
150	280	240	212	2	26	8	23
200	330	290	262	2	26	12	23

Dimension - Pump

Model	Size		Pump														Shaft					wt kg
	φ1	φ2	A	B	C	D	E	F	G	J	M	N	O	P	R	X	Z	T	Q	U	V	
50x40 FSHA	50	40	80	360	160	180	190	70	12	50	240	100	110	150	17	285	15	24	50	7	8	37
65x50 FSHA	65	50	100	360	160	180	212	70	12	50	265	100	110	150	17	285	15	24	50	7	8	42
65x50 FSJA					180	225	250	95	14	65	320	125										49
80x65 FSGA					160	180	212	70	12	50	265	100						24	50	7	8	39
80x65 FSHA	80	65	100	360	160	200										285	15					48
80x65 FSJA					180	225	250	95	14	65	320	125	110	150	17							60
80x65 FSKA			125	470	225	280	315	120	16	80	400	160				370	19	32	80	8	10	108
100x80 FSGA					160	200	212	95	14	65	280	125						24	50	7	8	49
100x80 FSHA			100	360	180	225	250				320						15					62
100x80 FSJA	100	80			200	250	280	120	15	80	360	160	110	150	17	285	19					70
100x80 FSGCA					225	250					320							32	80	8	10	62
100x80 FSHCA			125	360	180	250	280	95	14	65	345	125					15					65
125x100 FSJCA				360	225	280	315	120	16	80	400	160	110	150	17	285	19	38	80	8	10	108
125x100 FSKA	125	100	140	470	250	315										370	32					128
125x100 FSLA				530	280	355	400	150	20	100	500	200					24	42	110	8	12	168
150x125 FSHA	150				250	315	315	120	15	80	400	160					19	32	80	8	10	120
150x125 FSJA		125	140	470	355				16				110	150	17	370						128
150x125 FSKA	150				280	355	400	150	16	100	500	200					24	42	110	8	12	170
150x125 FSLA					315	400			20													205
200x150 FSHA	200			470	280	355	400	150	18	100	500	200	110	150	17	370		32	80	8	10	137
200x150 FSJA		150	160		375												24	42	110	8	12	183
200x150 FSKA	200			640	315	400	450	200	20	550			140	180	19	470		48	110	9	14	222

Unit:mm, unless otherwise stated

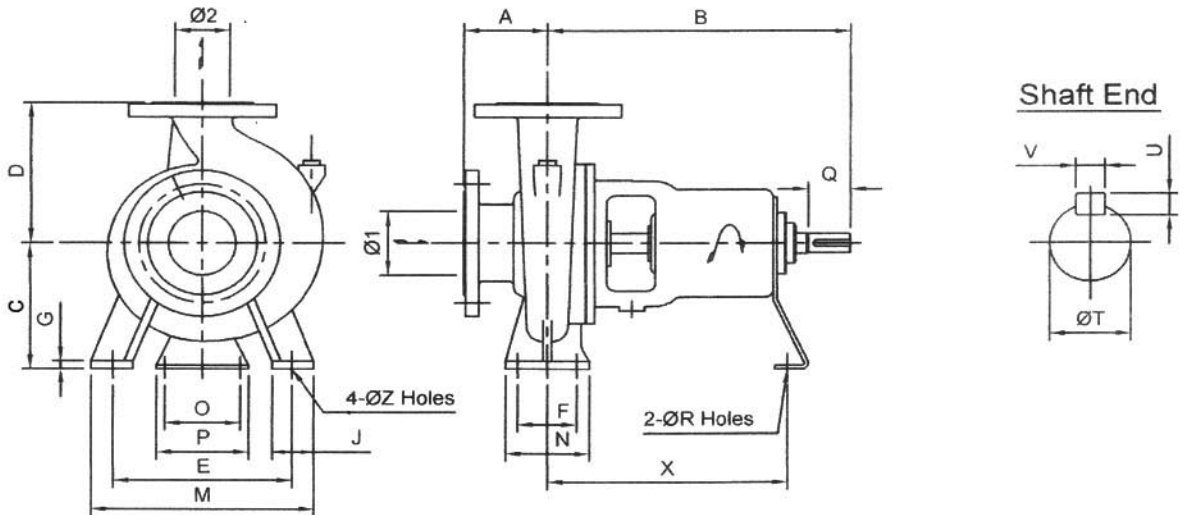
Ebara End Suction Volute Pump

Model FSA

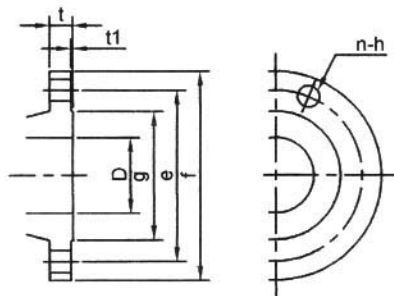
Dimension - Bare Shaft Pump (16 Bar Model)

50 Hz

Pump



Flange



Dimension - Flange (JIS 16K RF)

D mm	f mm	e mm	g mm	t1 mm	t mm	n	h mm
65	175	140	116	2	22	8	19
100	225	185	160	2	26	8	23
150	305	260	230	2	28	12	25
200	350	305	275	2	30	12	25
250	430	380	345	2	34	12	27

Dimension - Pump

Model	Size		Pump															Shaft					wt kg
	φ1	φ2	A	B	C	D	E	F	G	J	M	N	O	P	R	X	Z	T	Q	U	V		
100x65 FSKA	100	65	125	360	225	280	315	120	16	80	400	160	110	150	17	257	19	38	80	8	10	106	
150x100 FSKA	150	100	140	530	250	315	315	120	16	80	400	160	90	120	15	373	19	42	95	8	12	146	
150x100 FSNA			180	670	375	450	450	150	20	100	550	200	140	180	19	500	24	48	110	9	14	365	
200x150 FSLA	200	150	162	670	315	450	450	150	20	100	550	200	140	180	19	500	24	48	110	9	14	336	
200x150 FSNA			182		375	560												60		11	18	488	
250x200 FSLA	250	200	180	670	385	560	560	250	25	100	660	315	140	180	19	500	24	60	110	11	18	505	
250x200 FSNA			200		820	435												630		74	125	12	20

Unit:mm, unless otherwise stated