

Surface cleaning and disinfection



Index

Dilution Range

- ▶ ProMax
- ▶ ProDose
- ▶ ProSink

Page 4

Cleaning and disinfection Range

- ▶ ProWash
- ▶ ProKlyn
- ▶ JetNeat

Page 10

Foaming Range

- ▶ ProFoam
- ▶ ProFoam-R
- ▶ ProMulticlean
- ▶ Foam Cannon

Page 12

Spraying Range

- ▶ ProPulv
- ▶ ProNet
- ▶ ProDual
- ▶ ProAcid
- ▶ Spraying cannon

Page 14

Refill Range

- ▶ ProFill
- ▶ ProFill Premium
- ▶ ProFill Tower

Page 16

Proportioning Range

- ▶ Proportional spraying systems with:
 - proportional pump
 - compact pump

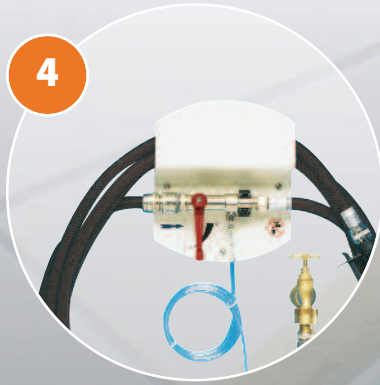
Page 18

Accessories

- ▶ Stainless steel trolley
- ▶ Hose reel
- ▶ Backflow preventer
- ▶ Spray gun
- ▶ Foamwand

Page 19





Claim the certifications for your safety, our hygiene unit is certified:

- **ACS** (France)
- **DVGW** (Germany),
- **SVGW** (Switzerland)
- **BELGAQUA** (Belgium),
- **KIWA** (Netherlands)



ProMax

Hydraulic

"State of the art, revolutionary hydraulics sets a new industry standard of performance and reliability"

Modular

"Modularity for maximum versatility and minimum inventory"

Robust and durable PP enclosure

ProMax allows additional units to be easily added to an existing installation.

Wall bracket mounting eliminated need to open enclosure during installation for tool free mounting.

Accurate dilution rates, selectable from a full range of supplied metering tips.



Ability to customize

"Easily personalized facing allows customization without costly printing minimums and set up charges"

Tool free

"No tools required to mount the wall bracket"

Originating from the **seko's** prestigious R&D laboratories, **ProMax** is the latest, most intuitive and cost effective dispensing system available on the market today.

By combining the revolutionary technology of patented hydrodynamics and user friendly, image enhancing features unique to **ProMax, seko** has produced the perfect solution for all chemical dilution applications in the area of cleaning large surfaces and istitutional.

- Compact, space saving design
- Quick, easy, tool free installation and maintenance
- Simple and intuitive thanks to the color coded Venturi and metering tips

Models available to safely and efficiently fill small, medium and large containers with accurately diluted solutions of chemicals concentrate:



Spray Bottle
– Grey Venturi
– Low flow rates



Mop Bucket
– Yellow Venturi
– Medium flow rates



Scrubber Machine
– Blue Venturi
– High flow rates



Button 1 product

Model	Chemical	Flow rate	Activation
PX B 1 F 04	1	Low	BUTTON to fill bucket and bottle
PX B 1 F 16		Medium	
PX B 1 F 30		High	BUTTON to fill bucket or scrubber machine



Features

- Working temperature up to 70° C
- Working pressure from 1 to 9 bar



Button 4 products

Model	Chemical	Flow rate	Activation
PX B 4 F 04	4	Low	BUTTON to fill bucket and bottle
PX B 4 F 16		Medium	
PX B 4 F 30		High	BUTTON to fill bucket or scrubber machine



Features

- Working temperature up to 70° C
- Working pressure from 1 to 9 bar



Slide 1 product

Model	Chemical	Flow rate	Activation
PX S 1 F 04	1	Low	SLIDE to fill bottle



Features

- Working temperature up to 70° C
- Working pressure from 1 to 9 bar



Slide 4 products

Model	Chemical	Flow rate	Activation
PX S 4 F 04	4	Low	SLIDE to fill bottle



Features

- Working temperature up to 70° C
- Working pressure from 1 to 9 bar



Features

The entire system can be easily disassembled and reassembled

Installation times are minimized. No screws to remove. No need to open the dispenser to install

Robust and durable PP enclosure

Cartridge Filter

The optional head filter, enhances filtration where needed in troublesome water conditions reducing service calls.

The filtration is independent of the number of units in line.



4 products selector

The 4 product **ProMax** is equipped with a new selector with O-ring of specially formulated elastomers. It offers the highest resistance to the widest range of chemicals.

Auto-locking connection

Tamper proof

housing and activating mechanism



Magnetic solenoid type activating valve

The large membrane activation ensures perfect operation, up to 9 bar pressure and 70° C

Venturi

FLEX GAP VERSION

The FLEX GAP is equipped with a patented backflow preventer device, minimizing restriction and ensuring maximum performance.

- Fast connections
- Three colors for three different flow rates:
 - Grey Low
 - Yellow Medium
 - Blue High
- Same size discharge hose for all models
- The venturi is self-activating, no flow restrictors needed
- Single product units can be easily converted to a 4 product model in the field
- Maximum strength
- Ease of maintenance
- Fully interchangeable parts
- Excellent performance
- Tool free maintenance

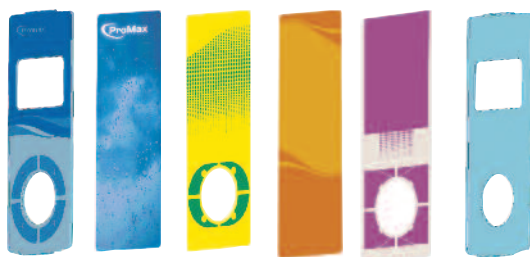
External tip seat

The product suction fittings are located outside, where the tips are also inserted.

- Accurate dilution rates
- Select from a full range of supplied metering tips



Project Your Company Image



- 95% of the facing available for proprietary graphics using underlays and removable clear faceplates.
- Customize the facing by type of product, improving the visual impact and the simplicity of use.

Also available the AIR GAP VERSION

- Two colors for two flow rates
 - Grey Low
 - Yellow Medium

Dilution range

Cleaning and disinfection range

Foaming range

Spraying range

Refill range

Proportional range

Institutional

Industrial

Car Wash

Janitorial

Kitchen

ProDose



Colored covers (on request)

Available in three different colors: yellow, red and green.

■ The standard pumps are always supplied with blue cover

■ The cover can be changed by customer at any time

Seko will not guarantee exclusive rights on the colored covers.

Spout Kit (included)

For a perfect and accurate dosage of chemicals



Adjustable flow rate

Through adjustment rings it's possible to dispense 7.5, 15, 22 or 30 cc per stroke.

Fast and easy installation

ProDose is equipped with a mounting bracket with different hole patterns for easy mounting. No drill required when replacing the existing pumps.

1 product

ProDose is a manually operated pump ideal for dosing chemicals, detergents, disinfectants or other concentrates.

Accurate dosing

Each stroke yields the same product volume output

Complete range

Models available with different elastomers compatible with most of the chemicals.

Reliable

- Spring not in contact with liquid
- Quick and easy installation and maintenance, no tools required

Features

- **Function** MANUAL DOSAGE OF 1 CHEMICAL WITHOUT WATER OR ELECTRIC POWER
- **Flow rate from 30 - 22 - 15 - 7.5 cc per stroke** adjustable through adjustment rings



Model	Chemical	O-ring and non-return valves	To fill...
HP 30 E	1	EPDM	sprayers, bottles, sinks, buckets, tanks etc.
HP 30 S		SILICON	
HP 30 F		FPM	

ProSink



- Ability to dose 1 or 2 different products
- Ball valve operation, no need to hold or lock a button
- Protecting system against cross-contamination integrated

- Smooth and ergonomic surface, with customizable front cover
- Professional user-friendly design
- Rugged stainless steel enclosure
- Strong, long lasting and easy to clean

Installs easily with 2 or 3 screws



15 colour coded dilution tips

With **ProSink** it's possible to automatically and consistently dispense mixtures of chemicals, detergents or disinfectants and water by simply turning a knob. It can conveniently fill large sinks with accurate product solutions.

- Quick and easy installation, no special tools required
- Compact, space saving design
- Connection direct to the water source
- No electric power or compressed air needed
- Certified protecting system against cross-contamination integrated
- **15 different mixing ratios**, to make the dosing accurate and effective
- Ultra lean tips

■ **Available accessories:**

- Tank holder
- Nipple for connection between systems



1 product

Model	Chemical	Flow rate	To fill...
PS K 1 F 04	1	Low	sprayers, bottles, etc.
PS K 1 F 16		Medium	sinks, scrubber machines, buckets, tanks etc.



Features

- Working temperature up to 60° C
- Working pressure from 1.5 to 9 bar



2 products

Model	Chemical	Flow rate	To fill...
PS K 2 F 04	4	Low	sprayers, bottles, etc.
PS K 2 F 16		Medium	sinks, scrubber machines, buckets, tanks etc.



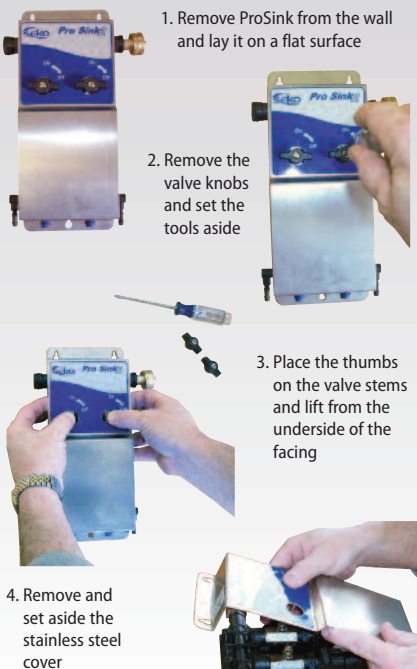
Features

- Working temperature up to 60° C
- Working pressure from 1.5 to 9 bar

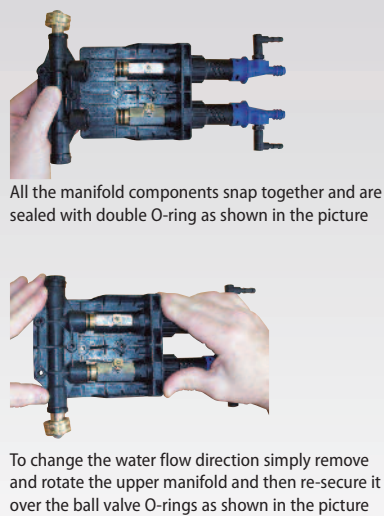


MAINTENANCE GUIDE

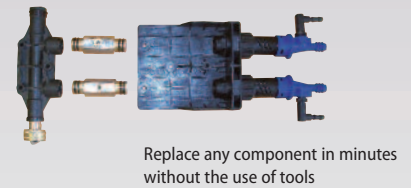
A Remove the stainless steel cover



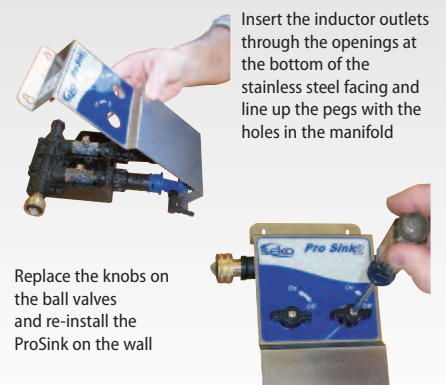
B Changing the water inlet direction



C Changing a ball valve



D Reassembling the ProSink



ProWash / ProKlyn / JetNeat



ProWash



ProKlyn



JetNeat



15 color coded dilution tips

JetNeat

- Mobile cleaning system, simple and efficient for washing and rinsing surfaces
- Works without any power or air supply
- The Venturi always produces a rich wet foam
- Includes a lance for rinsing
- Easy to install and easy to use.
- Quick coupling system for gun input and output to speed up washing and rinsing
- Available versions:
 - Jetneat 1.4 lt
 - Jetneat 2.5 lt



Features

- **Function** DOSAGE OF 1 CHEMICAL WITH WET FOAM AND RINSE
- **Working temperature** up to 45° C
- **Working pressure** from 2 to 6 bar
- **Dilution ratio** from 250:1 up to 10:1 (from 0.4% to 9%)
- Quick coupling system
- Adjustable spray

ProWash

Simple and rugged spraying system, designed to clean and disinfect by spraying on floors and surfaces.

Reduces water and chemical waste thus preserving the environment and reducing operational costs.

Venturi

- Body made of brass for greater resistance and robustness
- Internal Venturi extractable and interchangeable, made of PP for a high chemical compatibility
- High performance suction for optimal operation in all working conditions

2 products switch

Designed to be compatible with most of the chemicals

Discharge hose

- Food grade quality
- Very high resistance: 70°C - 20 bar



Gun with adjustable spray

- Anti-shock
- Anti-thermal shock

Compliance with the health standards

Features

- **Function** DOSAGE OF 1 OR 2 CHEMICALS AND RINSE
- **Working temperature** up to 60° C
- **Working pressure** from 1.5 to 5 bar
- **Dilution ratio** from 211:1 up to 11:1 (from 0.5% to 10.90%)
- Installation kit included and complete with mounting and suction accessories, inlet hose, discharge hose, gun and tank holder
- **Available versions:**
 - 1 product
 - 2 products
 - 1 product with BA disconnector
 - 2 products with BA disconnector

ProKlyn

Spray system, professional desing, simple and rugged designed to clean and disinfect by spraying on floors and surfaces.

Reduces water and chemical waste thus preserving the environment and reducing operational costs.

Venturi

- Body made of brass for greater resistance and robustness
- Internal Venturi extractable and interchangeable, made of PP for a high chemical compatibility
- High performance suction for optimal operation in all working conditions

2 products switch

Designed to be compatible with most of the chemicals



Discharge hose

- Food grade quality
- Very high resistance: 70°C - 20 bar

Gun with adjustable spray

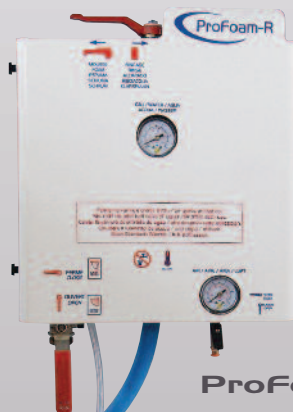
Anti-shock and Anti-thermal shock

Compliance with the health standards

Features

- **Function** DOSAGE OF 1 OR 2 CHEMICALS AND RINSE
- **Working temperature** up to 60° C
- **Working pressure** from 1.5 to 5 bar
- **Dilution ratio** from 211:1 up to 11:1 (from 0.5% to 10.90%)
- Installation kit included and complete with mounting and suction accessories, inlet hose, discharge hose, gun and tank holder
- **Available versions:**
 - 1 product
 - 2 products
 - 1 product with BA disconnector
 - 2 products with BA disconnector

ProFoam / ProFoam-R / ProMulticlean / Foam cannon



15 color coded dilution tips

ProFoam

Designed to generate a rich creamy foam, similar to the shaving cream, to maximize the contact time

Reduces water and chemical waste thus preserving the environment and reducing operational costs

Advantages

- High-quality, dry foam
- Optimal working time for the foam on the surfaces
- Low water consumption



Features

- **Function** DRY FOAM
- **Working temperature** up to 40° C
- **Working pressure of air and water** from 2 to 6 bar
- **Dilution ratio** from 1% a 22%
- **PVC cover:** HACCP conception, smooth, ergonomic and robust
- Food grade high quality hose and foam lance
- Hose rack incorporated
- Installation kit included and complete with mounting and suction accessories, inlet hose, discharge hose, lance and tank holder

ProFoam-R

Designed to generate a rich creamy foam, similar to the shaving cream, to maximize the contact time

Reduces water and chemical waste thus preserving the environment and reducing operational costs

Advantages

- High-quality, dry foam
- Optimal working time for the foam on the surfaces
- Lower water consumption



Features

- **Function** DRY FOAM AND RINSE
- **Working temperature** up to 40° C
- **Working pressure of air and water** from 2 to 6 bar
- **Dilution ratio** from 1% to 22%
- **PVC cover:** HACCP conception, smooth, ergonomic and robust
- Food grade high quality hose, foam lance and rinse nozzle
- Installation kit included and complete with mounting and suction accessories, inlet hose, discharge hose, lance, hose rack and tank holder

ProMulticlean

Designed to generate a rich creamy foam, similar to the shaving cream, to maximize the contact time

Reduces water and chemical waste thus preserving the environment and reducing operational costs

Available with optional BA disconnecter.

Advantages

- High-quality, dry foam
- Optimal working time for the foam on the surfaces
- Lower water consumption



Features

- **Function** DRY FOAM, RINSE AND SPRAY FOR 1 CHEMICAL
- **Working temperature** up to 40° C
- **Working pressure of air and water** from 2 to 6 bar
- **Dilution ratio** from 1% to 22%
- **PVC cover:** HACCP conception, smooth, ergonomic and robust
- Food grade high quality hose, foam lance and rinse nozzle
- Installation kit included and complete with mounting and suction accessories, inlet hose, discharge hose, lance, hose rack and tank holder

Foam cannon

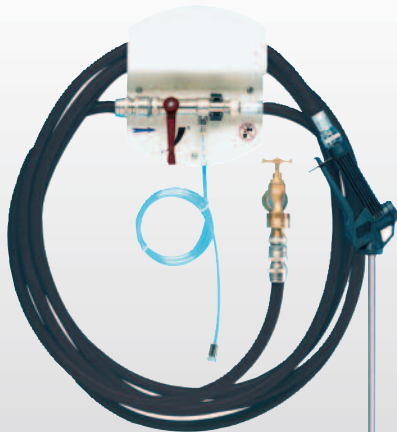
Pressurized mobile system, simple and practical, which produces a rich and thick foam

- The chemical is premixed with water, the system needs only the compressed air, constantly connected to operate
- Equipped with lance and dosing tube
- 24 or 50 litres models available
- Stainless steel and painted versions available
- **Working pressure of air** 8 bar
- Not connected to the water supply, no special certifications needed



Certified according to the European standards

Propulv / ProNet / ProDual / ProAcid / Spraying cannon



Propulv



ProDual



ProNet



Spraying cannon



ProAcid

ProPulv

Automotive spray system

Designed to spray pre-wash shampoos or detergents on cars, trucks etc.

Reduces water and chemical waste thus preserving the environment and reducing operational costs

- The system could be assembled on a trolley



Easy to maintain Venturi (yellow color)



Features

- **Function** DETERGENTE SPRAY
- **Working temperature** up to 50° C
- **Working pressure** from 2 to 6 bar
- **Water consumption** 4.2 L/min
- **Dilution ratio** from 0.6% to 15.7%
- **PVC cover:** HACCP conception, smooth, ergonomic and robust
- Stainless steel lance and high quality hose
- Hose rack incorporated
- Installation kit included and complete with mounting and suction accessories, inlet hose, discharge hose, lance and tank holder

ProNet

Automotive rinse-aid system

Designed to apply rinse-aid solution on cars, trucks and other vehicles.

- The system could be assembled on a trolley



Easy to maintain Venturi (green color)



Features

- **Function** SPRAY RINSE AID
- **Working temperature** up to 50° C
- **Working pressure** from 2 to 6 bar
- **Water consumption** 7 L/min
- **Dilution ratio** from 0.4% to 25.8%
- **PVC cover:** HACCP conception
- PVC lance and high quality hose
- Hose rack incorporated
- Installation kit included and complete with mounting and suction accessories, inlet hose, discharge hose, lance and tank holder

ProDual

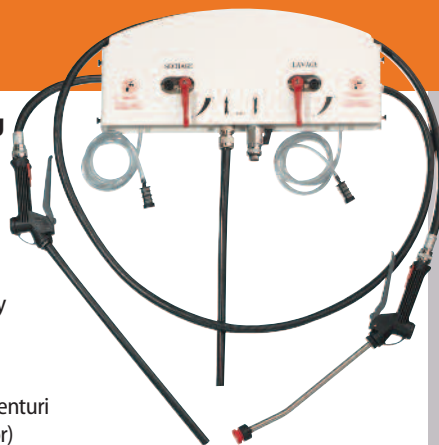
Automotive combined spraying & rinsing system

Designed to spray pre-wash shampoos or detergents and apply rinse-aid solution on cars, trucks, and other vehicles.

- The system could be assembled on a trolley



2 easy to maintain Venturi (yellow + green color)



Features

- **Function** SPRAY DETERGENT - RINSE AID
- **Working temperature** up to 50° C
- **Working pressure** from 2 a 6 bar
- **Water consumption** 4.2 L/min – 7 L/min
- **Dilution ratios** from 0.6% to 15.7% - from 0.4% to 25.8%
- **PVC cover:** HACCP conception
- Stainless steel and PVC lance and high quality hose
- Hose rack incorporated
- Installation kit included and complete with mounting and suction accessories, inlet hose, discharge hose, lance and tank holder

ProAcid

Automotive spraying system for strong acid and alkaline chemicals

- Designed to spray aggressive detergents or acid chemicals in different industries
- Engineered for a better resistance to high concentrated chemicals: PVDF Venturi, PVC lance...



Features

- **Function** SPRAY STRONG ACID & ALKALINE CHEMICALS
- **Working temperature** up to 50° C
- **Working pressure** from 2 to 6 bar
- **Water consumption** 4.2 L/min
- **PVC cover:** HACCP conception
- PVC lance and high quality hose
- Hose rack incorporated
- Installation kit included and complete with mounting and suction accessories, inlet hose, discharge hose, lance and tank holder

Cannone spray

Pressurized mobile system, simple and practical, to spray chemicals for car washing

- The chemical is premixed with water, the system needs only the compressed air, constantly connected to operate

- Equipped with lance and dosing tube
- 24 or 50 litres models available
- Stainless steel and painted versions available
- **Working pressure of air** 8 bar



Certified according to the European standards

Refilling

ProFill / ProFill Premium / ProFill Tower



ProFill



ProFill Premium



ProFill Tower

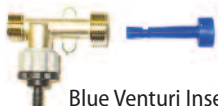


15 color coded dilution tips

ProFill Premium

ProFill Premium is a simple and convenient system, designed to refill, quickly and efficiently, the scrubber machines.

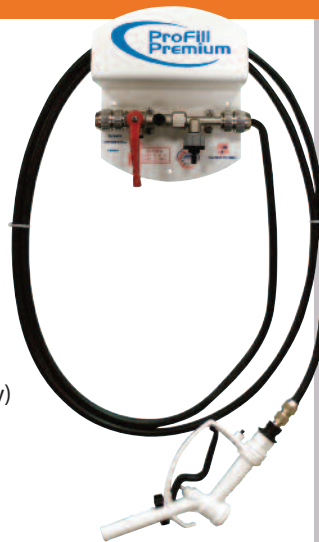
- Easy to install: no needs of special tools
- Quick couplers for a greater versatility
- Reduced maintenance thanks to the Blue Venturi Insert: no needs to disassemble the whole system
- Smart solution to refill the scrubber machines thanks to the white plastic dispensing gun resistant to chemicals
- Available with rinse position (supply of clear water only)



Blue Venturi Insert



Quick couplers



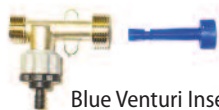
Features

- **Function** REFILLING & RINSE
- **Working temperature** up to 50° C
- **Working pressure** from 2 to 6 bar
- **Flow rate** 15 L/min
- **Dilution ratio** from 0.2% to 2.7%
- **PVC cover:** HACCP conception, smooth, ergonomic and robust
- Gun and high quality hose
- Hose rack incorporated
- Installation kit included and complete with mounting and suction accessories, inlet hose, discharge hose, lance and tank holder

ProFill

With **Profill** you can refill, quickly and efficiently, scrubber machines.

- Easy to install: no needs of special tools
- Quick couplers for a greater versatility
- Reduced maintenance thanks to the Blue Venturi Insert: no needs to disassemble the whole system
- Smart solution to refill the scrubber machines thanks to the white plastic dispensing gun resistant to chemicals
- Available with rinse position (supply of clear water only)



Blue Venturi Insert



Quick couplers



Features

- **Function** REFILLING & RINSE
- **Working temperature** up to 50° C
- **Working pressure** from 2 to 6 bar
- **Flow rate** 15 L/min
- **Dilution ratio** from 0.2% to 2.7%
- **PVC cover:** HACCP conception, smooth, ergonomic and robust
- Gun and high quality hose
- Hose rack incorporated
- Installation kit included and complete with mounting and suction accessories, inlet hose, discharge hose, lance and tank holder

ProFill Tower

Profill Tower is a high flow rate chemical dispensing system which constantly and automatically mixes water with the right amount of chemicals, to refill the scrubber machine.

- Ready-to-install system
- Connected directly to the water supply, it is automatically refilled with water and by fall fills small and large scrubber machines
- Smart solution to refill the scrubber machines thanks to its plastic ball valve and the 2" discharge hose
- Ability to choose between 15 different dilutions thanks to the color coded tips. Easy to insert into the non-return valve.
- Automatic switch off by a float valve or a magnetic valve
- EPDM check valve with spring in hastelloy.



Features

- **Function** QUICK REFILLING
- **Flow rate** 200 L/min
- **Tank capacity:** 300 liters
- Works without any electric power
- Standard version: product manually mixed
- 1 chemical product version: product and water are automatically mixed by the Venturi

Proportional spraying system



Proportional pumps



Compact proportional pumps

The proportional systems perform a "proportional" dosage under all conditions of flow rate and pressure, which makes them different from the Venturi systems.

- Works without electricity and compressed air
- Generates a real proportional dosage which is calculated on the water flow rate
- Built in by-pass for rinsing
- Built in air bleeder
- Few pieces in movement

Proportional pumps

Models available

Dosage 0.07 to 0.2 %	Flow rate 2500 l/h
Dosage 0.2 to 0.5 %	Flow rate 2500 l/h
Dosage 0.2 to 1.6 %	Flow rate 2500 l/h
Dosage 0.5 to 2 %	Flow rate 2500 l/h
Dosage 1 to 5 %	Flow rate 2500 l/h
Dosage 1 to 10 %	Flow rate 2500 l/h
Dosage 5 to 20 %	Flow rate 2500 l/h

Compact proportional pumps

Models available

Dosage 0.15 to 1.5 %	Flow rate 700 l/h
Dosage 0.8 to 5 %	Flow rate 700 l/h

the proportional pumps are available separately and in washing stations configurations

Accessories



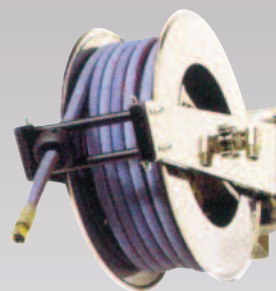
■ **Stainless Steel Trolley**



■ **BA Backflow preventer**



■ **Plastic Hose reel**



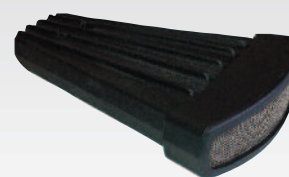
■ **Stainless Steel Hose reel**



■ **Spray gun**



■ **Spray gun with foam wand**



■ **Foamwand**

Stainless Steel Trolley

- Specially designed for all mobile use of our spraying and foaming systems
- Food grade quality frame, handles and wheels



Hose reel

The hose reel allows users to roll up the hose quickly and without any effort.

Features

- Entirely built in stainless steel (**AISI 304**) or plastic
- Can be mounted onto horizontal or vertical surfaces
- Automatic rolling

Advantages

- Rugged and long lasting
- Versatile and space saving

Foamwand

- Rich extra-thick wet foam
- Rugged PP reinforced with glass fiber body
- Versatile PVC anti shock front protection
- AISI 316 screen
- Quick coupling spray gun system

Backflow preventer

- Prevents any possible water contamination
- Easily accessible **BA triple check valve**, 3 connecting and testing points
- Approved by **DVGW** (Deutsche Vereinigung des Gas- und Wasserfaches e.V. - German Normative Bureau)
- Complies with **EN 1717**



Spray gun

Features

- Brass body, completely covered with food grade rubber
- High flow nickel plated nozzle, stainless steel spring and pin
- Reinforced lever trigger
- Adjustable spray
- Quick coupling system
- Up to 80°C working temperature and 25 bar working pressure

Advantages

- For heavy-duty applications
- Fast connection
- Easy to connect

An International Group at your service

seko is an International Group, developing, manufacturing and delivering its products in more than 50 countries, through its 16 subsidiaries and an extended network of distributors, agents and authorized dealers.

seko has been a significant manufacturer of metering pumps and dosing systems for over 40 years. This long activity allowed **seko** to acquire a vast experience in diversified applications and to confirm its international success in many industrial fields through the supply of reliable solutions for the dosing, injection and transfer of liquids.



BRAZIL

■ **Seko do Brasil Comercio de Sistemas de Dosagem Limitada**
03170-050 São Paulo (SP)
sekobrasil@sekobrasil.com.br
www.sekobrasil.com.br

BENELUX

■ **Seko Benelux B.V.**
7532 SK Enschede
(The Netherlands)
info@sekobenelux.com

CHINA

■ **Seko China Ltd**
072750 Hebei
china@seko.com
www.sekochina.com

DENMARK

■ **Seko Denmark**
DK-4930 Maribo
info@seko.com

FRANCE

■ **Seko Lefranc-Bosi S.A.**
77435 - Marne La Vallée
Cedex 2
lefrancbosi@lefrancbosi.com
service.commercial@seko.fr
www.lefrancbosi.com

GERMANY

■ **Seko Deutschland GmbH**
55252 Mainz - Kastel
info@seko-messtechnik.de
www.seko-germany.com

ITALY

■ **Seko Spa**
02010 S.Rufina - Rieti
sales@seko.com

ITALY

■ **Seko Spa [Process & Sytems]**
20068 Peschiera Borromeo -
Milano
info.psd@seko.com
info@seko.com

ROMANIA

■ **Seko Sieta S.r.l.**
400393 Cluj-Napoca
info.dpro@seko.com

RUSSIA

■ **OOO Seko**
129347 - Moscow
sekorussia@seko.com
www.sekorussia.ru

SINGAPORE

■ **Seko Dosing Systems Asia Pacific Pte Ltd**
608838 Singapore
asiapacific@seko.com

SOUTH AFRICA

■ **Seko Southern Africa (PTY) Ltd**
Kyasand - Johannesburg -
Gauteng
sales@sekosa.co.za

SPAIN

■ **Seko Ibérica Sistemas de Dosificación S.A.**
08960 Sant Just Desvern -
Barcelona
sekoiberica@sekoiberica.com

SWEDEN

■ **Seko Sweden**
26123 Landskrona
info@seko.com

TURKEY

■ **Seko Endüstriyel Pompalar ve Proses Sistemleri San. ve Tic. Ltd. Şti.**
Kartal Istanbul
info@seko.com.tr
www.seko.com.tr

UNITED ARAB EMIRATES

■ **Seko Middle East FZE**
P.O. Box 42090 - Hamriyah
Free Zone, Sharjah
info@seko.ae
sales@seko.ae

UNITED KINGDOM

■ **Seko UK Chemical Controls Ltd**
Harlow, Essex - CM19 5JH
seko.uk@seko.com
www.sekouk.com

USA

■ **Seko Dosing Systems Corporation**
Tullytown - PA 19007
sales@sekousa.com
www.sekousa.com

For more information
www.seko.com

